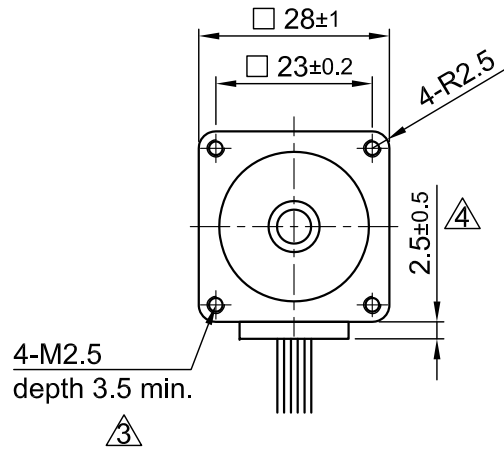
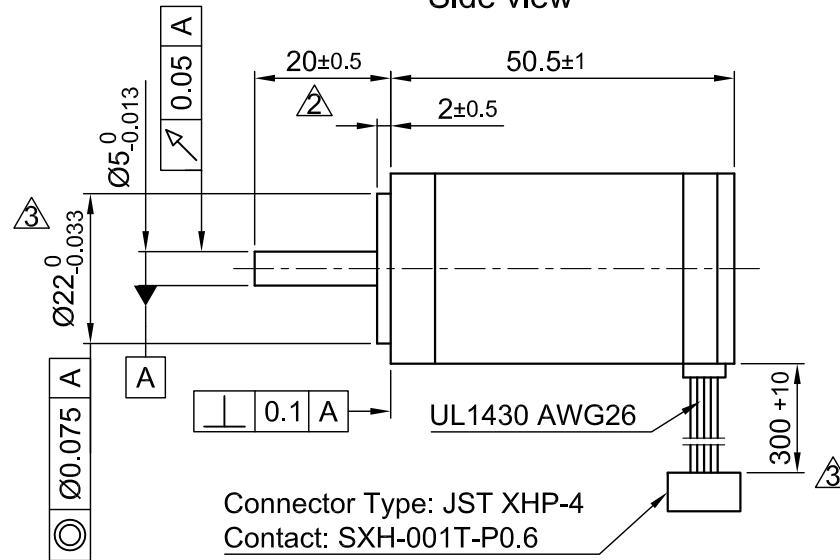


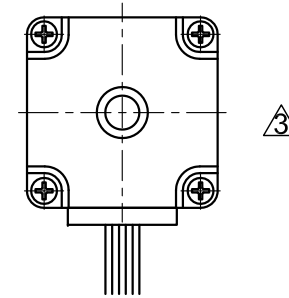
Front view and mounting



Side view

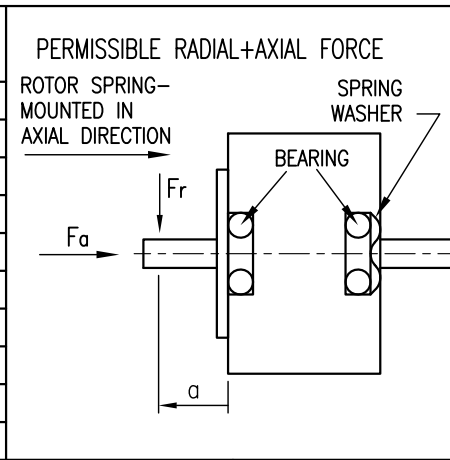


Rear view



Connector Type: JST XHP-4  
Contact: SXH-001T-P0.6

SPECIFICATION	CONNECTION	BIPOLAR
VOLTAGE (VDC)		3.22
AMPS/PHASE		1.4
RESISTANCE/PHASE (Ohms)@25°C		2.3±15%
INDUCTANCE/PHASE (mH) @1KHz		1.8±20%
HOLDING TORQUE (Nm) [lb-in]		0.117 [1.035]
DETENT TORQUE (Nm) [lb-in]		4.5x10 <sup>-3</sup> [0.04]
STEP ANGLE (°)		1.8
STEP ACCURACY (NON-ACCUM)		±5%
ROTOR INERTIA (Kg-m <sup>2</sup> ) [lb-in <sup>2</sup> ]		1.8x10 <sup>-6</sup> [6.148x10 <sup>-3</sup> ]
WEIGHT (Kg) [lb]		0.25 [0.551]

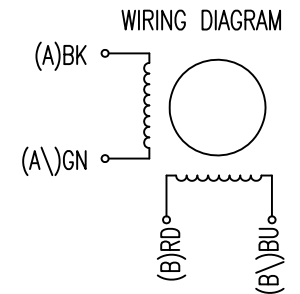


TYPE OF CONNECTION (EXTERN)	MOTOR		
	CONNECTOR PIN NO.	LEADS	WINDING
BIPOLAR			
A —	1	BK	A
A\ —	2	GN	A\
B —	3	RD	B
B\ —	4	BU	B\

TEMPERATURE RISE: MAX.80°C (MOTOR STANDSTILL; FOR 2 PHASE ENERGIZED)	AXIAL-FORCE Fa (N)	Fa=7			
AMBIENT TEMPERATURE -10~ 50°C [14°F ~ 122°F]	DISTANCE a (mm)	5	10	15	20
INSULATION RESISTANCE 100 MOhm (UNDER NORMAL TEMPERATURE AND HUMIDITY)	RADIAL-FORCE Fr (N)	58	36	26	20
INSULATION CLASS B 130° [266°F]			AXIAL	RADIAL	
DIELECTRIC STRENGTH 500VAC FOR 1 MIN. (BETWEEN THE MOTOR COILS AND THE MOTOR CASE)	SHAFT PLAY (mm)	0.075		0.025	
AMBIENT HUMIDITY MAX. 85% (NO CONDENSATION)	AT LOAD MAX: (N)	10	5.0		

FULL STEP 2 PHASE-Ex.,  
WHEN FACING MOUNTING END (X)

STEP	A	B	A\	B\	
1	+	+	-	-	CCW
2	-	+	+	-	
3	-	-	+	+	CW
4	+	-	-	+	



4	change tolerance/ revise drawing	11.01.17	A.S.
3	CHANGE TOL. M2.5/ø22/ rework draw	16.12.15	A.S.
2	CHANGE TOLERANCE	21.02.14	J.D.
REV	DESCRIPTION	DATE	DRN



Surface specification DIN ISO 1302	General tolerances DIN ISO 2768- cH	Work piece edge DIN ISO 13715
---------------------------------------	--	----------------------------------

APVD	M.S.	06.12.11
CHKD		
DRN	J.W.	06.12.11
SIGNATURE	DATE	

STEPPING MOTOR

DWG.NO

ST2818L1404-A